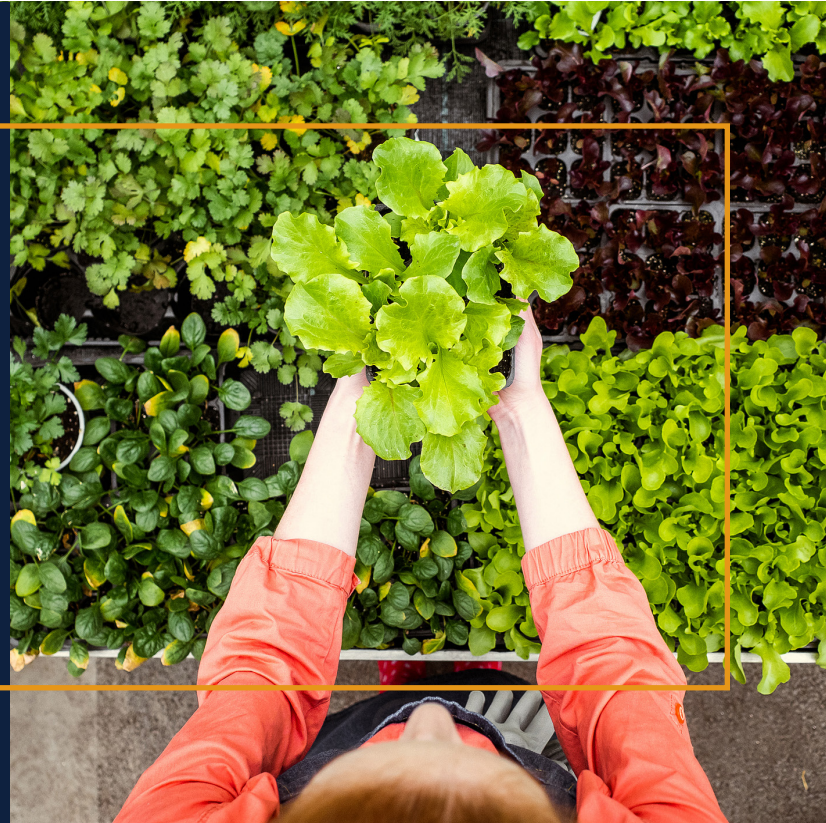


Hartford Global Impact Fund

Annual Impact Report



Hartford Global Impact Fund seeks long-term capital appreciation by investing in companies whose core goods or services are believed to address some of the world’s major social and environmental challenges. Impact measurement and management are core components of the Fund’s investment process. Each year Wellington Management, the Fund’s sub-adviser, quantifies the positive impacts the companies the Fund invests in are having on the world.

This report features a summary of impact highlights for the past year, along with a company spotlight for each of the Fund’s three impact themes.



LIFE ESSENTIALS

- Affordable Housing
- Clean Water & Sanitation
- Health
- Sustainable Agriculture & Nutrition



HUMAN EMPOWERMENT

- Digital Divide
- Education & Job Training
- Financial Inclusion
- Safety & Security



ENVIRONMENT

- Alternative Energy
- Resource Efficiency
- Resource Stewardship



In 2024, the Hartford Global Impact Fund made investments in companies that:

131,045

Supplied or financed nearly 131,045 units of affordable housing

5.8bcm

Provided or treated more than 5.8 billion cubic meters of water

567m

Provided healthcare products and services to more than 567 million patients and customers

116m

Provided digital access to more than 116 million people in developing countries

749,321

Provided education, training, and career support to nearly 750,000 people

43m

Supplied access to financial services to more than 43 million underserved individuals and businesses

9,700

Protected nearly 10,000 businesses and individuals with cybersecurity tools and technologies

46.2m

Avoided 46.2 million metric tons of greenhouse gas (GHG) emissions through renewable energy generation


515m

Avoided 515 million metric tons of GHG emissions through improved resource efficiency and resource stewardship

Please see the back page of this report for important information on impact measurement calculation.


Supporting Impact Worldwide

The global reach of the companies that the Fund invested in reflects Wellington's commitment to create meaningful change across regions and impact themes.




Health
Boston Scientific

Manufactures devices that help diagnose and treat diseases; leads in treating coronary artery disease and vascular disorders.



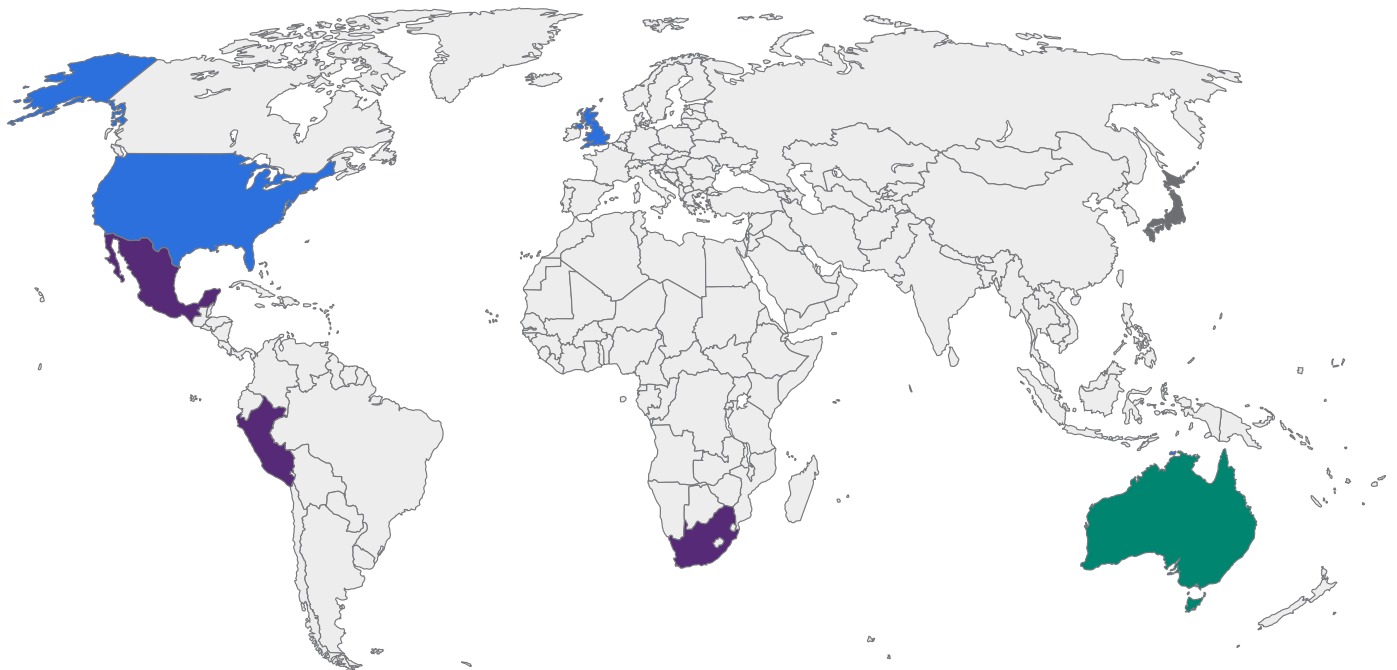
Sustainable Agriculture & Nutrition
Nomad Foods

Provides affordable, nutritious vegetable and protein products. Recyclable packaging and frozen foods increase shelf life and reduce waste.




Multi-Theme
Sekisui House Ltd.

Increases supply of safe (seismic resistance), energy efficient (thermal insulation), high-quality, affordable homes.





Education & Job Training
Laureate Education Inc.

Provides education and job placement support to student populations from disadvantaged socioeconomic groups.



Digital Divide
Vodacom Group

Provides digital access to customers in South Africa and other African countries, particularly in rural communities that lack network connection.



Resource Stewardship
Cleanaway Waste Management Ltd.

Supports responsible waste-management technology for waste-to-energy facilities and recycling infrastructure.

Companies highlighted above were selected based on impact theme as well as the country of risk associated with the company. Country of risk is based on factors including management location, country of primary listing, country of revenue, and reporting currency of the issuer. Companies selected are for illustrative purpose only and reflect Fund holdings as of 12/31/24. Source: Wellington Management's Global Impact Report, July 2025, modified to reflect the Fund's impact themes. Company examples throughout this report are provided for illustrative purposes only, are not representative of all investments made by the Fund, and should not be construed as advice or a recommendation of any of the specific securities presented. It should not be assumed that an investment in the company has been or will be profitable. The Fund may not currently or in the future hold any particular company shown in this report.

Life Essentials

Affordable Housing: Independence Realty Trust



High-quality affordable housing is scarce in much of the US, particularly places that feature well-paying jobs and desirable cultural amenities or social services. Independence Realty Trust (IRT) develops and operates high-quality, affordable, multifamily rental properties near desirable employment and transportation hubs across the US. Its efforts help reduce the housing-cost burden, particularly for young or average-income workers.

Five Dimensions of Impact

WHAT	Improving lives and communities by providing access to affordable housing
WHO	Younger and/or average-income workers who are often overextended economically by rental costs
HOW MUCH	Owned and operated 113 multifamily properties, consisting of 33,615 units, in 2024
CONTRIBUTION	Average rent-to-income ratio of new residents is 22%, below the US national average
RISK	Execution: Maintaining a balance between quality and affordability of homes

Qualitative Assessment

In 2024, the average price of a single-family home in the US was more than seven times the average annual household income, surpassing near-historic highs. Renting is just as expensive, with US renters spending an average of 42% of their pre-tax income on housing in 2024, up from 35% in 2021.

By developing and operating high-quality, affordable multifamily properties, IRT assists average-wage earners in the US, many of whom find it difficult to buy or rent in amenity-rich communities that balance a positive living experience with affordability. IRT's properties are often located in non-gateway US markets, strategically positioned in good school districts, and within easy commuting distance to major employment centers.

While the number of units operated by IRT slightly decreased over the years, we remain confident in the business model and the positive social outcomes it can ultimately achieve.

Company examples on pages 4-9 aim to illustrate in-depth impact measurement and management analysis by Wellington Management's use of the Impact Measurement Project's five dimensions of impact norms: who, what, how much, contribution, and risk. Examples were selected by Wellington Management based on full holdings as of 12/31/24 and were selected on nonperformance criteria; the largest position in each impact theme was selected. If the largest position was highlighted in the past two years, then the second-largest position in the theme was selected. If there were more than one additional company, or no new positions in the theme, the largest trade is highlighted (based on the number of shares). Qualitative Assessments have been extracted from Wellington Management's Global Impact Report, July 2025. All source information for the data on these pages is available in Wellington's report.

Life Essentials

Clean Water & Sanitation: Veralto



Veralto supports clients in managing, treating, purifying, and otherwise safeguarding water through municipal systems and wastewater treatment facilities. We believe that investing in the company contributes to global water solutions by improving access to quality water for the benefit of society and the environment.

Five Dimensions of Impact

WHAT	Protected clients' water resources by addressing water safety, scarcity, and responsible management
WHO	Residents of 45 countries; almost 50% of revenue generated in North America
HOW MUCH	In 2024, helped customers conserve more than 320 million cubic meters of water
CONTRIBUTION	Helped ensure safe water for approximately 40% of the global population daily in 2024
RISK	Evidence: Limited high-quality data due to a large customer base, making it challenging to assess the overall impact

Qualitative Assessment

Amid global population growth, demand for natural resources increases. Water consumption is expected to increase as much as 25% by 2050. Veralto helps safeguard water resources by addressing safety, scarcity, and responsible management. It accomplishes this by offering proprietary precision instrumentation and advanced water treatment technologies, which customers use to measure, analyze, and treat water in various sectors.

We're impressed with Veralto's environmental and social impact. In 2024, ChemTreat, a market-leading Veralto brand, helped customers conserve over 320 million cubic meters of water. Veralto owns other market-leading brands, including Hach, an analytical measurement system of instruments, digital solutions, and related consumables for water testing. In 2024, Hach served more than 149,000 customers and helped 3.4 billion people access safe water daily.

Human Empowerment

Digital Divide:
GoDaddy



While an online presence is often crucial for small businesses to connect with customers and grow their business, many lack the resources, technical expertise, and design skills to navigate this journey independently. GoDaddy offers a variety of services, from website building to online marketing management, helping small businesses and entrepreneurs worldwide set up and maintain their e-commerce sites.

Five Dimensions of Impact

WHAT	Helping small businesses and entrepreneurs to build an online presence
WHO	Supported more than 20 million customers in 2024
HOW MUCH	Managed 81 million website domains in 2024
CONTRIBUTION	Customizable products offered on a streamlined web experience helped drive customer retention to 84% in 2024
RISK	External: Ability to ensure customers' data security and privacy

Qualitative Assessment

GoDaddy helps small businesses and entrepreneurs build an online presence that can scale as they grow. The company provides customers with a simple platform and toolset, including website building, digital marketing, and e-commerce solutions. GoDaddy's recently launched AI tool helps customers accelerate and simplify this process. We believe GoDaddy demonstrates its impact through its strong customer-retention rate and numerous customer-success anecdotes. Legions of small business owners who admit to having scant understanding of how to build an online presence report strong satisfaction and success using GoDaddy's tools.

We're encouraged by the number of customers that GoDaddy serves. We also appreciate the company's effort to drive the industry with its Venture Forward research initiative focused on microbusinesses, often with fewer than 10 employees.

Human Empowerment

Education & Job Training: Stride



In almost every part of the world, online education is now accepted and utilized, with companies like Stride providing high-quality, customized learning experiences. Stride’s platform helps US primary and secondary “K12-powered” schools use technology and leverage digital content. The company provides a range of educational solutions, including full-time online schooling, supplemental educational services, and curriculum development.

Five Dimensions of Impact

WHAT	Improves high-quality education and the ability to respond to each learner’s needs
WHO	Schools and districts that require flexible learning options
HOW MUCH	Provided education to 194,000 students in 2024
CONTRIBUTION	High overall parent satisfaction, including with teaching quality and individual attention to children at Stride “K12-powered” schools
RISK	Execution: Balancing online education and in-person teaching and interaction

Qualitative Assessment

The use of education technology in US school districts increased by more than 200% from 2019 to 2023. Integrating these tools into traditional, in-person curricula remains complex for students, teachers, administrators, and parents.

Stride supports primary and secondary education with virtual and blended (online and in-person) learning, offering curriculum, instruction, and support services. At least 7.5 million US students require Individualized Education Plans, and 65% of public schools are understaffed in special education. Technology has helped teachers increase efficiency and personalize instruction.

While we acknowledge that virtual teaching cannot fully replace the benefits of social-emotional learning via in-person instruction, we’re pleased with the growing number of students Stride supports, and we’ll continue to monitor Stride’s offerings and integration into schools.

Human Empowerment

Financial Inclusion: Globe Life



Globe Life addresses financial barriers to health and life insurance for low-income individuals in the US. The company offers affordable, accessible policies and ensures its customers are informed about the benefits of its products. In our view, investing in Globe Life can assist low-income individuals in securing their financial future and improving quality of life. Basic insurance, Globe Life's area of focus, is a key to preventing households from becoming financially unmoored in a qualifying event.

Five Dimensions of Impact

WHAT	Reduce financial barriers for low-income individuals in the US by offering affordable, easy-to-understand insurance policies
WHO	Underserved, lower- to middle-income customers
HOW MUCH	In 2024, Globe Life issued 14.4 million life insurance policies
CONTRIBUTION	Issued more individual life insurance policies and has more policyholders than any US peer
RISK	Execution: Ensuring customers fully understand their insurance policies

Qualitative Assessment

Life insurance provides crucial financial protection, ensuring beneficiaries can maintain their standard of living in the event of a policyholder's death. It's estimated that nearly 60% of Americans either lack life insurance or are unaware of their coverage status, mainly because of policy cost. Globe Life addresses these issues by offering affordable life and supplemental health insurance to underserved, lower- to middle-income markets.

Globe Life designs its products to be accessible and easy to understand. It provides a diversified distribution platform and a simplified underwriting process. It also employs more than 10,000 agents who are instructed to inform customers of their coverage terms and educate them about additional product offerings, such as Medicare Supplement Insurance. We continue to believe that Globe Life's differentiated product offerings provide an important financial product to an underserved US customer base, broadening financial inclusion.

Environment

Alternative Energy: Nextracker



Nextracker is a leading producer of integrated solar trackers and software solutions used in utility-scale solar-generation projects globally. Its products enhance the performance of solar panels by enabling them to follow the sun during daylight hours, improving energy production and reducing the cost of energy. We believe investing in Nextracker helps address the world's growing energy requirements while reducing GHG emissions.

Five Dimensions of Impact

WHAT	Climate mitigation through the manufacturing of integrated solar trackers and software solutions used in solar projects
WHO	Serving customers in 40 countries
HOW MUCH	130 gigawatts (GW) of solar tracker systems shipped in 2024
CONTRIBUTION	Market leader in solar trackers based on GW shipped for eight consecutive years
RISK	External: Weather conditions may undermine the production of renewable energy and associated emissions avoided

Qualitative Assessment

Between 2024 and 2030, solar photovoltaic (PV) technologies may generate 80% of the increase in global renewable energy capacity. Decarbonization and electrification are influencing the surge in demand for solar power, as is solar's increasing cost efficiency. Over the past decade, the cost of solar generation has decreased by 90%, with Nextracker contributing to this achievement. In 2024, Nextracker became the first US solar company to ship 130 GW of generation capability, equivalent to twice the peak load of California

Innovation is key to Nextracker's continuous leadership. Its NX Navigator software provides real-time monitoring, weather-risk mitigation, and streamlined maintenance. As climate change increases the frequency and severity of extreme weather, products that minimize downtime and revenue losses from solar PV may become vital.

Measuring Impact

This report was developed to provide an indication of the aggregate social and environmental impact that the Hartford Global Impact Fund is considered to have contributed to through its investments in companies that meet its principal strategy as disclosed in the Fund's prospectus.

Wellington Management calculated impact data results based on full holdings as of December 31, 2024 using proprietary metrics where data is available. These metrics are used to assess a company's progress toward its particular business objectives. If 2024 data was not available, 2023 or the nearest to 2024 data was used. Company information was sourced from multiple sources, including annual and quarterly reports, industry research pieces, company websites, press releases, case studies, and company engagements. The data shown reflects the total impact generated by a particular company due to the difficulty of attributing impact in proportion to the size of the Fund's share ownership per holding.

Top Ten Holdings¹

Company	Impact Theme	%
Globe Life, Inc.	Financial Inclusion	2.90
Laureate Education, Inc.	Education & Job Training	2.79
Adtalem Global Education, Inc.	Education & Job Training	2.55
Eli Lilly & Co.	Health	2.38
Autodesk, Inc.	Resource Efficiency	2.22
Xylem, Inc.	Clean Water & Sanitation	2.19
Schneider Electric SE	Resource Efficiency	2.16
Modine Manufacturing Co.	Resource Efficiency	2.13
Popular, Inc.	Financial Inclusion	2.12
Westinghouse Air Brake Technologies Corp.	Resource Efficiency	2.09
Percentage of Portfolio		23.53

¹ As of 12/31/25. Subject to change. Percentages may be rounded.

The views expressed here are those of Wellington Management. This material is not a recommendation to buy or sell any security. This material and/or its contents are current as of the time of writing and may not be reproduced or distributed in whole or in part, for any purpose, without the express written consent of Wellington Management or Hartford Funds. Forward-looking statements or estimates may be made. Actual results and occurrences may vary significantly. Certain data provided is that of a third party. While data is believed to be reliable, no assurance is being provided as to its accuracy or completeness.

Important Risks: Investing involves risk, including the possible loss of principal. Security prices fluctuate in value depending on general market and economic conditions and the prospects of individual companies. • Small- and mid-cap securities can have greater risks and volatility than large-cap securities. • Foreign investments may be more volatile and less liquid than U.S. investments and are subject to the risk of currency fluctuations and adverse political, economic and regulatory developments. These risks may be greater, and include additional risks, for investments in emerging markets. • The Fund's impact investing focus may cause the Fund to forego certain investment opportunities and underperform funds that do not have a similar focus. • To the extent the Fund focuses on one or more sectors, such as the industrials, health care, and information technology sectors, the Fund may be subject to increased volatility and risk of loss if adverse developments occur.

Investors should carefully consider a fund's investment objectives, risks, charges, and expenses. This and other important information is contained in the fund's prospectus and summary prospectus, which can be obtained by visiting hartfordfunds.com. Please read it carefully before investing.

Mutual funds are distributed by Hartford Funds Distributors, LLC (HFD), Member FINRA. Advisory services are provided by Hartford Funds Management Company, LLC (HFMC). Certain funds are sub-advised by Wellington Management Company LLP. HFMC and Wellington Management are SEC registered investment advisers. HFD and HFMC are not affiliated with any sub-adviser.

Hartford Global Impact Fund

Seeing some of the world's biggest challenges as a world of opportunity

Fund Tickers :

I:HGXIX
 A:HGXAX
 C:HGXCX
 F:HGXFEX
 R3:HGXRFX
 R4:HGXSX
 R5:HGXTX
 R6:HGXXVX
 Y:HGXYX

Contact your financial professional for more information.

Impact Theme Weights¹

Life Essentials (%)	
Affordable Housing	4
Clean Water & Sanitation	5
Health	16
Sustainable Agriculture & Nutrition	7
Human Empowerment (%)	
Digital Divide	6
Education & Job Training	5
Financial Inclusion	13
Safety & Security	11
Environment (%)	
Alternative Energy	3
Resource Efficiency	23
Resource Stewardship	6
Multi-Theme (%)	
	2